



# ***A GOOD TRUCK***

## **PRODUCT GUIDEBOOK**

---

# PANORAMIC VIEW OF THE FACTORY AREA

2024



## ABOUT US

# COMPANY

The company was founded in 1954 and entered the automotive production field in 1969. It is one of the earliest enterprises in China to engage in automotive production. At present, it has more than 7,000 employees, and covers an area of 880,000 square meters. It has formed a production capacity of 300,000 passenger cars and 80,000 commercial vehicles per year, and has independent brands: passenger vehicle "Forthing", commercial vehicle "CHENGLONG"

Dongfeng Liuzhou Motor Co., Ltd. is the first automobile production enterprise in Guangxi, the first medium-sized diesel truck production enterprise in China, the first independent brand family vehicle production enterprise of Dongfeng Group, and the first batch of "National Vehicle Export Base Enterprises" in China.



# COMMERCIAL



# A GOOD TRUCK

## THUNDER POWER FOR THOUSANDS OF MILES

Keep moving forward bravely, just like you, constantly surpassing yourself for greater prospects. Combining internal and external cultivation, balancing safety, aesthetics, and practicality, comprehensively evolving, higher quality, for your higher dreams.



## CONTENTS

DONGFENG LIUZHOU MOTOR CO., LTD HISTORY 01-06

INTRODUCTION 07-12

PLATFORM SELLING POINTS 13-36

VEHICLE PARAMETERS 37-57



## A GOOD TRUCK

Not just transportation, but an engine of efficiency.

# CHAPTERS 01

DONGFENG LIUZHOU MOTOR  
HISTORY



**1954** Creation of Liuzhou Agricultural Machinery Factory



**1969** The first "Liujiang" brand vehicle was produced



**1987** Car production exceeded thousands



**1991** Liuzhou Motor Commercial Vehicle Base completed and put into production



**1997** Liuzhou Motor Factory was renamed as Dongfeng Liuzhou Motor Co., Ltd. (DFLZM)

HISTORICAL CONSTRUCTION

HISTORICAL CONSTRUCTION



**1979** Changed name to Liuzhou Motor Factory



**1981** Joined Dongfeng Motor Industry Joint Venture



**2001** DFLZM Launches its first car "Forthing Lingzhi"



**2003** THE "Dongfeng Balong" heavy truck Launch Ceremony



**2005** The DFLZM Third Base workshop completed in July and put into production



**2006** Commercial Vehicle Base held a pledge meeting



**2007** Successful launch of "Balong 507 Heavy Truck and Joyear Multi-purpose Vehicle"



**2009** The 30,000th commercial vehicle was produced



**2014** The first phase of Liudong passenger car base was completed and put into production



**2015** DFLZM was honored as "The First China's Top 100 Independent Brands" at the First China Independent Brand Summit



**2016** the Forthing SX6 was officially launched in Beijing.

## HISTORICAL CONSTRUCTION

## HISTORICAL CONSTRUCTION



**2010** Commercial Vehicle sales over 10 Billion CNY



**2011** DFLZM's new base in Liudong started construction



**2013** Forthing CM7 become the designated vehicle for the China-ASEAN Expo.



**2017** Liudong Commercial Vehicle Base Assembly Workshop Production Line officially launched



**2018** Joyear T5 debuted at Beijing Auto Show



**2019** DFLZM 2.7 Millionth Vehicle was produced at Liudong Commercial Vehicle Base



**2020** Creating the fourth consecutive year of new record production of commercial vehicles



**2021** Dragon Future Technology Business Incubator Unveiled



**2022** DFLZM unveils new-generation semi-heavy-duty platform H5V

## HISTORICAL CONSTRUCTION



**2022** Dongfeng Forthing's new 7-seat MPV, the Forthing U-tour, was officially launched.



**2023** The new pure-electric SUV Forthing Friday was officially launched at the conference.



**2023** Dongfeng Forthing debuts 4 new energy models at Munich Motor Show

# 2024

HONOR 70 YEARS  
GATHER MOMENTUM FORWARD

CREATE VALUE FOR CUSTOMERS,CREATE WEALTH FOR SOCIETY





## A GOOD TRUCK

Redefining the value of commercial transportation by crafting world-class, high-quality products through lean manufacturing.

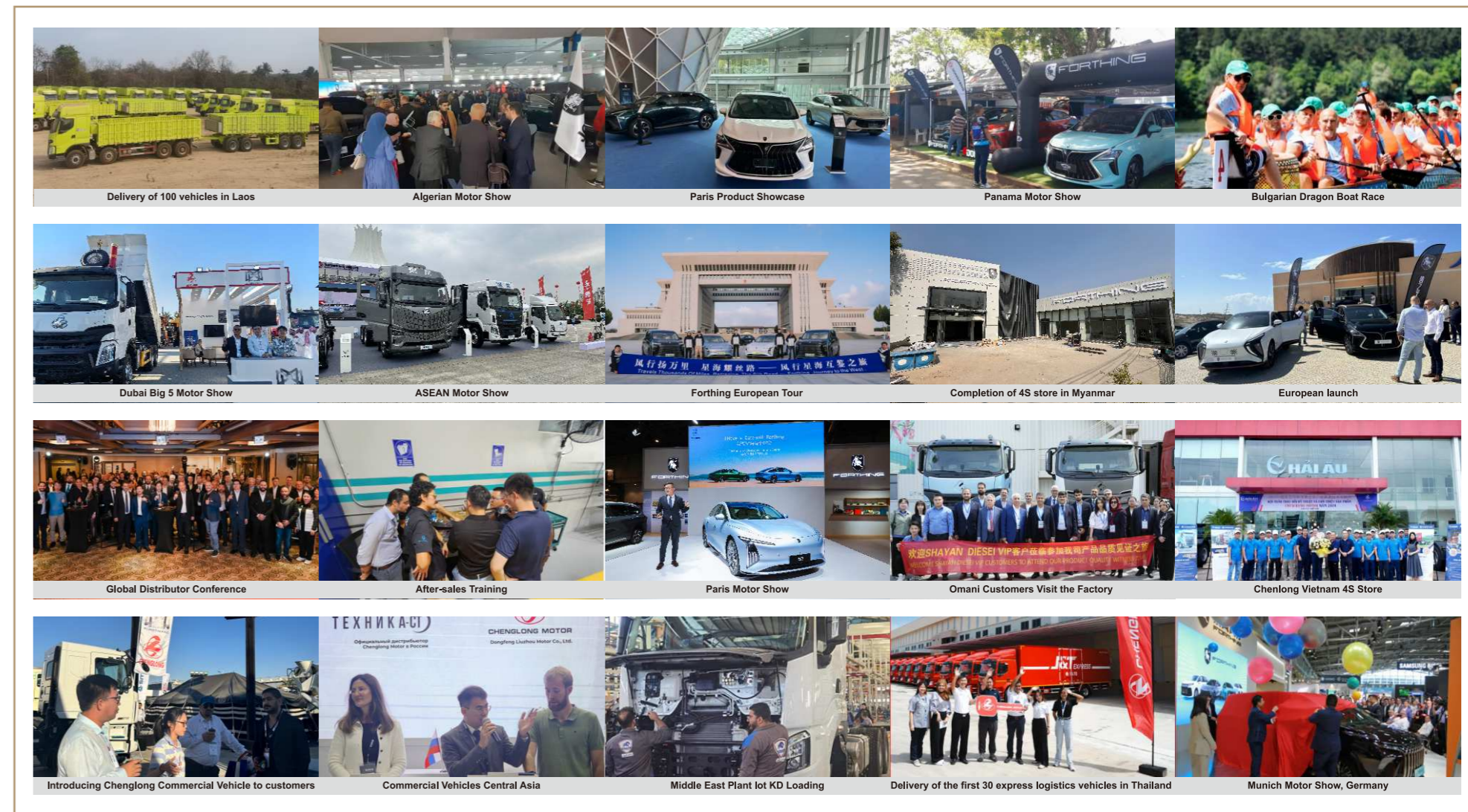
# CHAPTERS 02

INTRODUCTION

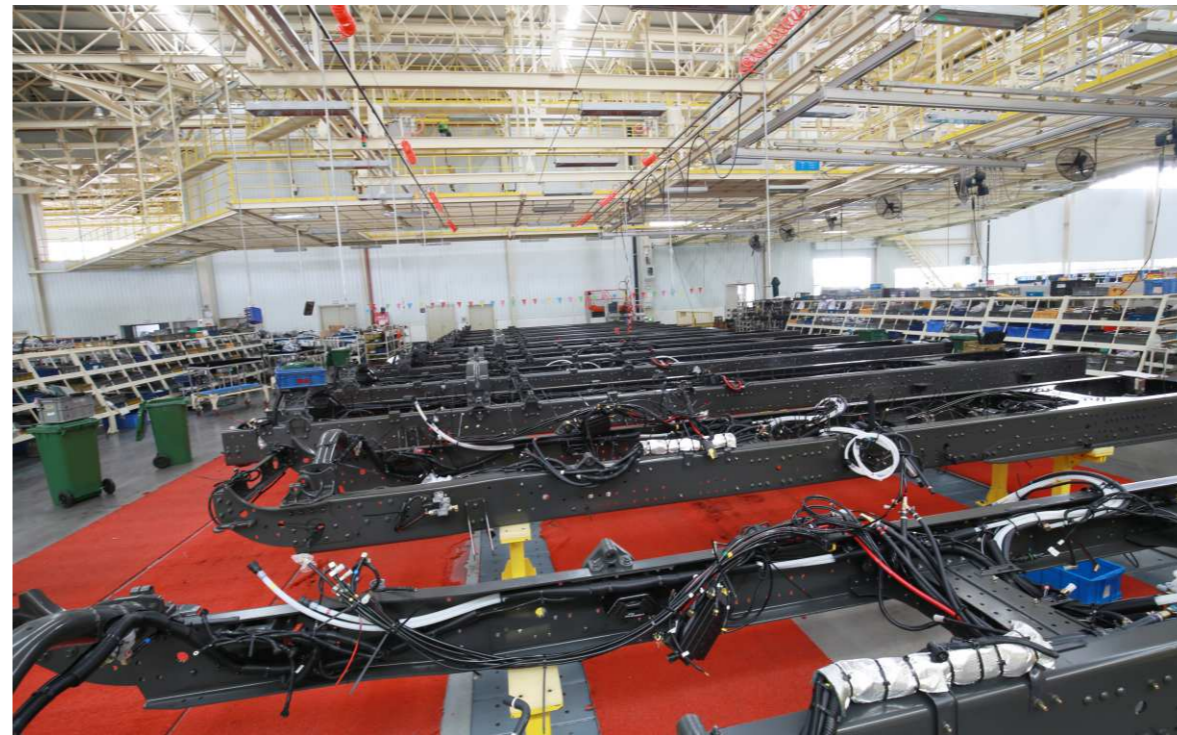
# OVERSEAS MARKETS



# OVERSEAS MARKETS



A  
GOOD  
TRUCK



# WORKSHOP ENVIRONMENT

## Operation Overview

We have complete four major automobile manufacturing processes and supporting facilities, own two new production bases for commercial vehicles and passenger vehicles in Liudong, with an annual production capacity of 100,000 commercial vehicles and 400,000 passenger vehicles.

Operation Overview

# WORKSHOP ENVIRONMENT

A  
GOOD  
TRUCK

## TRACTOR



HK

H7

H5V

H5

M3

## CARGO TRUCK



H7

H5

M3

L3

L2

## DUMP TRUCK



H7

H5

M3

## SPECIAL PURPOSE VEHICLE / NEW ENERGY



MIXER

CRANE

SPRINKLE TRUCK

L2 ELECTRIC

H7 HYDROGEN



## A GOOD TRUCK

Delving into customers' operational scenarios, we provide safer, more efficient, and more intelligent professional logistics and transportation solutions—helping customers reduce costs and increase efficiency.

# CHAPTERS 03

PLATFORM  
SELLING POINTS

# PLATFORM GENERIC SELLING POINT

H7 - HK - H5 - H5V - M3 - L2

## ■ Safety

Keel cab, integral doors, front and rear stabilizer bars, and a blind spot-free lower view mirror layout.

## ■ Multi-layer laminated glass

UV/IR-blocking green-wave interlayer glass with superior thermal insulation to minimize heat ingress into the cabin.

## ■ Braking system

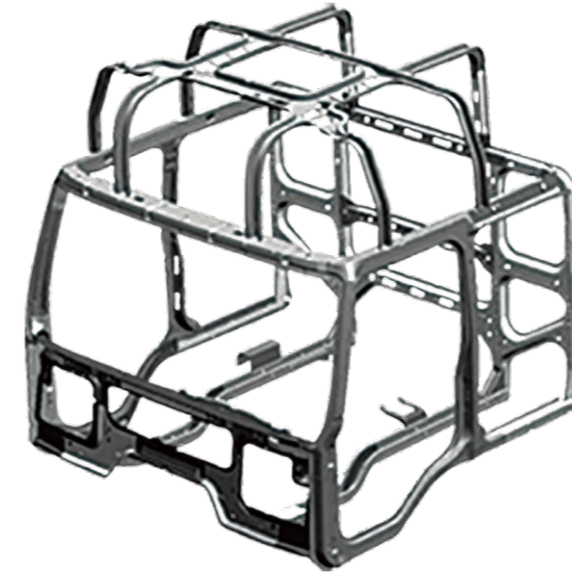
Equipped with engine braking and WABCO ABS, ensures stable braking performance and shorter braking distance.

## ■ Passenger car-grade painting process

Advanced 5-layer coating system (Zinc coating, Cathodic electrode position (CED) primer, Mid-coat, Metallic base coat, Clear topcoat) ensures exceptional corrosion resistance, permanent deformation-proof body, rust-free durability, and long service life.

## ■ Frame material

Baosteel 750MPa high-strength steel enhances overall reliability and load capacity. Advanced integrated cathodic electrophoresis + powder coating process achieves advanced domestic electrophoretic coating standards, significantly improving weather resistance and salt spray corrosion resistance.



**WABCO**  
Vehicle Control Systems



# PLATFORM-SPECIFIC SELLING POINTS

# H7



**H73/H73R/H73E**

Cabins

**2200\*2460\*2295**

Cab Size mm(L\*W\*H)

**Tractor, Cargo**

Strain of a Species

**Unlimited**

Applicable Emission



■ **LIGHTING SYSTEM:**

Integrated projector headlights + LED auxiliary high beams + daytime running lights (DRLs) for enhanced driving safety.

■ **CLIMATE ADAPTABILITY:**

Front panel with expanded heat dissipation area optimized for tropical climates.

■ **EFFICIENT TRAVEL:**

Yuchai 13L large-displacement engine, power up to 490-530 horsepower, strong power, high operating efficiency.

■ **LIGHTWEIGHT DESIGN:**

Lightweight, scientific optimization design, application of high-strength materials, weight reduction does not reduce the quality, lighter than 250kg.

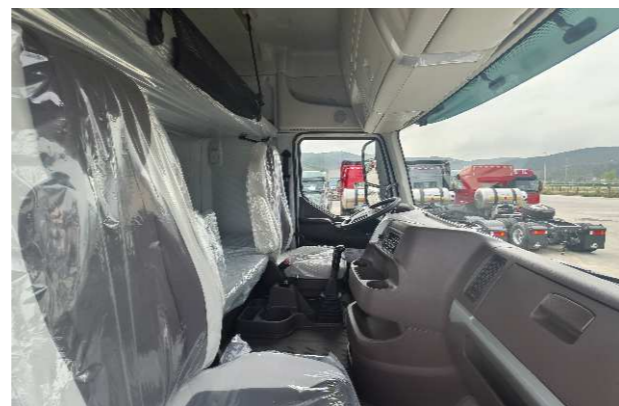


**BRIGHT SPOT**

HIGH ROOF FLAT FLOOR



## INTELLIGENT ENHANCEMENT



### ■ **ERGONOMIC CABIN DESIGN:**

Surround-view cockpit layout with optimized accessibility and unobstructed visibility.

### ■ **STORAGE SOLUTIONS:**

Under-Berth Drawer Storage Compartment + exterior-access cargo compartment for enhanced convenience.

### ■ **NVH OPTIMIZATION:**

Premium Soundproof and Thermal Insulation Materials for quieter, more comfortable cabin environment.

### ■ **INFOTAINMENT & CONTROLS:**

7-inch color instrument cluster + 10.1-inch touchscreen display + multifunction steering wheel, supporting multimedia connectivity and user-friendly operation.

### ■ **CUSTOMIZABLE INTERIOR FEATURES:**

Dashboard phone mount, premium Customizable Seats, optional 220V power supply (V2L), vehicle fridge, Co-Pilot Dashboard Table, and expansive berths for personalized and home-like comfort.



# PLATFORM-SPECIFIC SELLING POINTS

# HK



**H73NB**

Cabins

**2360\*2460\*2300**

Cab Size mm(L\*W\*H)

**Tractor, Cargo**

Strain of a Species

**National VI, Euro VI**

Applicable Emission

## LIGHTWEIGHT AND FUEL-EFFICIENT

Through the application of technologies such as new materials, new structures, new processes, topology optimization, and functional integration, more than 100 scientific weight reduction measures have been implemented, leading the industry in the level of vehicle lightweighting.

International high-end integrated power chain, ultra-high pressure fuel injection technology, the full range of closed-loop high-precision oil supply compensation, to achieve greater horsepower and more fuel saving.



### ■ EXTERIOR DESIGN:

Dragon-Face Family Design Language: Bold, dignified, and dynamic design language with a commanding presence and striking visual impact.

### ■ SEDAN-LIKE INTERIOR & ERGONOMICS:

Soft-touch materials for localized cladding, sunken instrument panel for improved forward visibility, and optional front/side sunshade curtains.

### ■ LIGHTING:

Full-LED projector headlights + daytime running lights (DRLs) to enhance driving safety.

### ■ CLIMATE ADAPTABILITY:

Front panel with expanded heat dissipation area optimized for tropical climates.



Hardcore dragon armor design  
Waterfall grille texture improvement



High tech headlights and  
rugged front bumper design

## BRIGHT SPOT

HIGH ROOF LOW FLOOR



### ■ CUSTOMIZED COMFORT FEATURES:

Dual phone holders, premium ergonomic seats, optional 220V power supply (V2L), roof-mounted parking AC, dedicated heater, portable fridge, front-passenger fold-down desk, and 1.1-meter ultra-wide berth for home-like comfort.

### ■ INFOTAINMENT SYSTEM:

12.3-inch multifunction cluster + 12.8-inch touchscreen display + multi-function steering wheel for advanced multimedia connectivity.

### ■ SMART CONTROLS & CONVENIENCE:

Keyless entry, push-button start, automatic lighting, automatic wipers, AMT rotary dial, remote vehicle control, hill-start assist, and intuitive human-machine interface (HMI).

### ■ ERGONOMIC COCKPIT LAYOUT:

Surround-view cockpit design with optimized accessibility and panoramic visibility.

### ■ STORAGE SOLUTIONS:

Drawer-style under-bed storage cabinets + three side-access rooftop cargo bins for enhanced convenience.

### ■ NOISE & THERMAL MANAGEMENT:

High-quality sound-absorbing materials and thermal-insulation interior for quiet cabin ambiance.

### ■ AERODYNAMIC & DRIVER COMFORT:

Low-drag cab design + extended adjustment range for driver's seat to improve comfort during long-haul drives.



# PLATFORM-SPECIFIC SELLING POINTS

# H5



**H53**  
Cabins

**2000\*2300\*2300**  
Cab Size mm(L\*W\*H)

**Tractor, Cargo**  
Strain of a Species

**Unlimited**  
Applicable Emission



**BRIGHT SPOT**  
HIGH ROOF FLAT FLOOR

■ **STREAMLINE MODELING:**

New streamlined shape design, less wind resistance, lower air resistance, reduce wind resistance loss, more fuel-efficient.

■ **LIGHTING SYSTEM:**

Integrated projector headlights + LED auxiliary high beams + daytime running lights (DRLs) to enhance road visibility and driving safety.

■ **STABLE CHASSIS:**

Mature chassis, reliable and durable. front 8-piece and rear 9+5-piece leaf spring suspension ensures the vehicle's carrying capacity and driving stability.



# INTELLIGENT ENHANCEMENT



## ■ MULTIMEDIA & CONTROLS:

7-inch color instrument cluster + 7-inch MP5 infotainment system + multi-function steering wheel for advanced multimedia connectivity and user-centric interaction.

## ■ CUSTOMIZED COMFORT FEATURES:

Dashboard phone holder, premium ergonomic seats with customization options, optional 220V power supply (V2L), and 1.65-meter-wide berth (6.6m<sup>2</sup> sleeper space) for extended comfort.

## ■ ERGONOMIC COCKPIT DESIGN:

Surround-cockpit layout with optimized control accessibility and panoramic visibility for intuitive operation.

## ■ NOISE & THERMAL MANAGEMENT:

Sound-absorbing and thermal-insulation interior materials to reduce noise intrusion and maintain cabin comfort.



# PLATFORM-SPECIFIC SELLING POINTS

# H5V



**H53MB**  
Cabins

**2120\*2300\*2300**  
Cab Size mm(L\*W\*H)

**Tractor, Cargo**  
Strain of a Species

**National VI, Euro VI**  
Applicable Emission



## ■ EXTERIOR DESIGN:

"Dragon Face" family styling: A bold, dignified design language blending elegance at rest and aggressive dynamism in motion, creating a commanding presence with striking visual.

## ■ SEDAN-LIKE DESIGN & SAFETY FEATURES:

Sedan-inspired cabin with localized soft-touch cladding, sunken instrument panel for improved forward visibility, and full-LED projector headlights + daytime running lights (DRLs) to enhance night time visibility and driving safety.

## ■ CLIMATE ADAPTABILITY:

Front panel with expanded heat dissipation area optimized for tropical climates.



## ■ SAFETY

### L2 INTELLIGENT DRIVING TECHNOLOGY:

Commercial landing more than L2 intelligent driving technology, multi-dimensional realization of assistant driving, in the "Double" to "Single".

### BRAKING EFFICIENCY:

Matching with Jibo engine braking, the braking distance of the vehicle is shortened.



## BRIGHT SPOT

HIGH ROOF LOW FLOOR



## NEW INTERIOR DESIGN

Middle floor features an open flat layout with a spacious activity area, ensuring free movement. With a ceiling height of 1950mm and an up to 900mm transverse width, the space allows drivers to turn around comfortably.

### ■ MULTIMEDIA:

7-inch color instrument cluster or 10.1-inch touchscreen display + multi-function steering wheel for advanced infotainment integration and driver-centric interaction.

### ■ SMART CONTROLS & AUTOMATION:

Keyless entry + push-button start + auto-headlights + auto-wipers + AMT rotary dial, hill-start assist, and intuitive HMI for enhanced convenience and safety.

### ■ ERGONOMIC COCKPIT LAYOUT:

Surround-cab design with optimized control accessibility and panoramic visibility for intuitive operation.



Intelligent 7 inch Mp5



Multi-function steering wheel



One button start



## FUNCTIONALITY UPGRADE

The center console adopts two-color layout, the upper part of the center console full of power feeling gives people a sense of vision that is suspended above, the integrated design of the instrument table has good convenience for operation, and the integrated transmission lever and the instrument table have good indoor passability, using silver-plated, wood grain, piano paint and soft coating materials, steering wheel, instrument table, door flared switch to achieve car-grade styling and feel, simple and clear layout.

### ■ CUSTOMIZED COMFORT & CONVENIENCE:

Dashboard phone holder, premium ergonomic seats (customizable), optional 220V power supply (V2L), roof-mounted parking AC, dedicated heater, portable fridge, telescopic under-bed fold-down desk, and 0.9-meter ultra-wide berth for home-like comfort.

### ■ STORAGE SOLUTIONS:

Drawer-style under-bed storage cabinets + two side-access rooftop cargo bins for enhanced practicality.

### ■ NOISE & THERMAL MANAGEMENT:

Sound-absorbing and thermal-insulation interior materials for a quiet, comfortable cabin environment.

# PLATFORM-SPECIFIC SELLING POINTS

# M3



**M32B**

Cabins

**2000\*2100\*1850**

Cab Size mm(L\*W\*H)

**Dump (Flat Roof)**

Strain of a Species

**Unlimited**

Applicable Emission

## BRIGHT SPOT

### ■ EXTERIOR DESIGN:

A modern design language emphasizing visual appeal and dynamic proportions.

### ■ ENGINE FUEL SAVING TECHNOLOGY

Equipped with a fuel saving switch as standard, the corresponding gear can be selected according to the working conditions, and the fuel injection amount is automatically controlled by the ECU. The power is adjusted reasonably, effectively saving fuel.

### ■ RESISTANCE REDUCTION DESIGN:

The streamlined cab design, combined with exterior drag reduction design, reduces wind resistance by 14% and fuel consumption by 4%.

### LIGHTWEIGHT

By adopting high-strength lightweight frame, aluminum alloy fuel tank, aluminum alloy air storage cylinder, lightweight axle and other structural optimization and lightweight design while ensuring the bearing capacity, the weight is lighter and the fuel consumption is lower.

Lightweight design of the entire vehicle increases the capacity of a single shipment.



**M33B**

Cabins

**2000\*2300\*2300**

Cab Size mm(L\*W\*H)

**Cargo (High Roof)**

Strain of a Species

**Unlimited**

Applicable Emission



## FULL INTERIOR FUNCTIONALITY

### CABIN

Inside, the center console area, with its array of practical features, such as the radio, air conditioning control system, front and rear fog lamps, and fuel-saving switches, provides drivers with convenience and comfort.

When the center seat is unoccupied, it can be easily folded into a practical storage space. The seats inside the car are wrapped in perforated leather material, which is comfortable to the touch, while the headrests of the secondary seats support independent adjustment to meet different needs.



#### ■ FLAT FLOOR CABIN:

Flat-floor design improves cabin accessibility and ergonomic layout for driver/passenger movement.

#### ■ SEDAN-LIKE DRIVING EXPERIENCE:

Integrated electronic control system: Cabin integrates a centralized digital interface for intuitive manipulation and convenience.

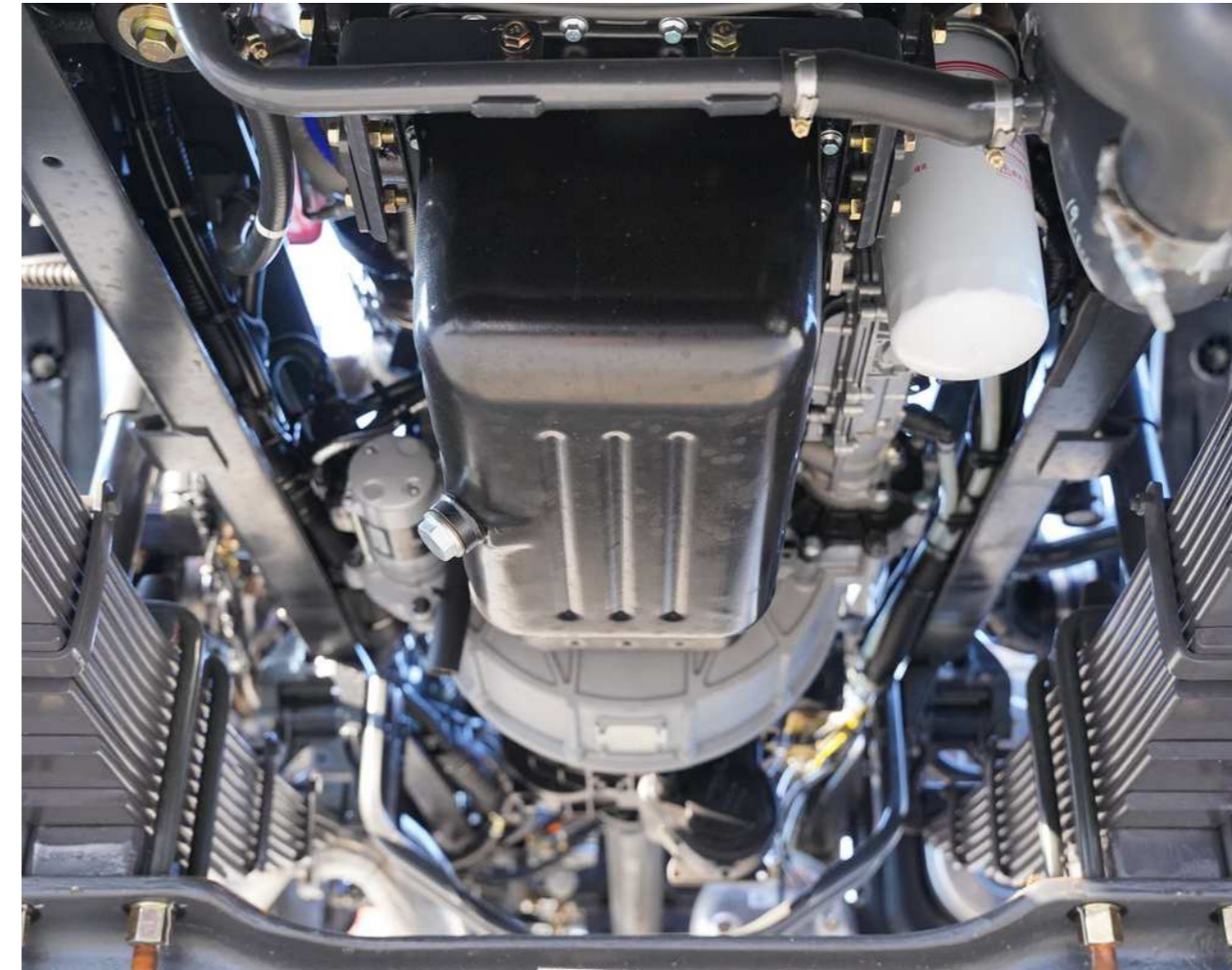
#### ■ AMPLE STORAGE SOLUTIONS:

Including left/right roof-mounted compartments, instrument panel storage, and under-bed storage bins for optimized practicality.

#### ■ NOISE REDUCTION:

Ultra-low interior noise: Achieves 65 dB(A) cabin noise level (3 dB lower than industry mainstream), meeting premium imported vehicle standards.

## ← BRIGHT SPOT



## STRONG BEARING CAPACITY

### CHASSIS

New chassis, modularized design, neat arrangement, use of advanced technology in Europe and America, universal design to reach the level of Europe and the United States. Improve reliability and simplify maintenance.

16T hub reduction cast steel rear axle. It adopts integral casting axle box, which has large driving force and strong bearing capacity. Best reliability.



#### ■ CONVENIENCE FEATURES:

Remote central locking + power windows: Luxury-grade configuration for enhanced security and user convenience.

#### ■ CLIMATE CONTROL:

High-capacity air conditioning: Standard dual-zone climate system maintains year-round comfort.

#### ■ RIDE COMFORT:

Full-floating cab suspension: Standard equipment ensures superior smoothness and vibration damping.

#### ■ INFOTAINMENT & SAFETY:

Standard 5-inch monochrome LCD instrument panel + Bluetooth MP3: Core tech package.  
Optional upgrades: MP5 touchscreen + reversing camera/360° surround-view imaging for advanced driver assistance.

## ← BRIGHT SPOT

# PLATFORM-SPECIFIC SELLING POINTS

# L2



**L21UBH/L21URBE**  
Cabins

**1710\*1995\*1905**  
Cab Size mm(L\*W\*H)

**Light Truck**  
Strain of a Species

**National/EuroVI, EV**  
Applicable Emission



## BRIGHT SPOT

■ **COCKPIT-STYLE INTERIOR FEATURES:**

Full-width instrument cluster, 7-inch color LCD instrument panel or 10.1-inch multimedia touch-screen. Premium leather multifunction steering wheel with integrated controls. Dual mobile phone holders and 33L under-seat storage for optimized practicality .

■ **SPACIOUS CAB CONFIGURATION:**

1,995mm-wide cab, accommodates bench seating for passengers and offers 180° reclining function for extended rest periods.

## BRIGHT SPOT

■ **EXTERIOR DESIGN:**

"Dragon Face" family styling, Aerodynamic streamlined fairing, integrated rearview mirror, and smoked LED headlights + daytime running lights (DRLs) for enhanced visual dominance and aerodynamic efficiency .

■ **HINGED FRONT ACCESS PANEL:**

Designed for easy maintenance of HVAC systems and electrical components.





## A GOOD TRUCK

Delving into customers' operational scenarios, we provide safer, more efficient, and more intelligent professional logistics and transportation solutions—helping customers reduce costs and increase efficiency.

# CHAPTERS 04

---

## VEHICLE PARAMETERS

## Configuration Overview

	4*2	6*4	6*4	6*4
<b>Model Code</b>	LZ4181H7AB	LZ4256H7DB	LZ4251M7DB	LZ4257QDC
<b>Driving Type</b>	4*2	6*4	6*4	6*4
<b>Wheelbase</b>	3800	3300+1350	3300+1350	3300+1350
<b>Cabin</b>	H73D	H73H	H73H	H73H
<b>Engine</b>	YC6K1248-50 (2250N.m)	YC6MK385-50 (1800N.m)	YC6MK420-50 (2000N.m)	YC6MK400-33 (1800N.m)
<b>Transmission</b>	12TX2421TD	12JSD180TA	12JSD200TA-B	12JSD180T
<b>Clutch</b>	Φ430 Imported	Φ430 Pull-Type	Φ430 Imported	Φ430 Imported
<b>Front Axle</b>	6 ton disc brakes	457	457	7T
<b>Rear Axle/ Ratio</b>	485 Forged/Pressed Steel Axle / Ratio 3.071:1 with Disc Brakes	2x 457 Pressed Steel Axles / Ratio 4.444:1	2x 457 Pressed Steel Axles / Ratio 4.444:1	2x 485 Pressed Steel Axles / Ratio 4.10:1
<b>Leaf Spring</b>	2/-	9/12	9/12	9/12
<b>Frame</b>	282(8)	282(8+4)	282(8+4)	282(8+4)
<b>Fuel Tank</b>	600+600L Aluminum	600L Aluminum	600L Aluminum	600+400L Aluminum
<b>Steering Machine</b>	Imported	Domestic (China-made)	Domestic (China-made)	Domestic (China-made)
<b>Tire</b>	315/80R22.5	11.00R20-18PR	11.00R20-18PR	12.00R20-18PR



## Configuration Overview

Model Code	LZ4181H7AB
Driving Type	4*2
Wheelbase	3800
Cabin	H73NBH
Engine	Z14E600 51 (2750N.m)
Transmission	ECE12+hydraulic retarder
Clutch	Φ430Imported
Front Axle	6.5-ton disc brakes (Kemna)
Rear Axle/ Ratio	485 Forged/Pressed Steel Axle / Ratio 2.688:1 with Disc Brakes (Kemna)
Leaf Spring	2-piece rear axle, imported quad airbags
Frame	282(8)
Fuel Tank	600+600LAluminum
Steering Machine	imported Bosch Electro-Hydraulic Steering Gear
Tire	315/70R22.5-20PR all-aluminum alloy tires



 Configuration Overview

Model Code	LZ4252H5DM3
Driving Type	6*4
Wheelbase	3900+1350
Cabin	H56NB
Engine	6K1350N-60 (2200N.m,CNG)
Transmission	F12JZ22A
Clutch	Φ430Push-Type
Front Axle	6.5-ton disc brakes (Kemna)
Rear Axle/ Ratio	2x New 440 Twin Rear Axles with Disc Brakes / Ratio 3.083:1
Leaf Spring	2/-
Frame	282(8)
Fuel Tank	8*260L(glass fiber)
Steering Machine	Domestic (China-made)
Tire	315/70R22.5-18PR



**Configuration Overview**

	4*2	6*4
<b>Model Code</b>	LZ4170H5AB	LZ4251M3
<b>Driving Type</b>	4*2	6*4
<b>Wheelbase</b>	3500	3300+1350
<b>Cabin</b>	H53D	H57D
<b>Engine</b>	YC6A270-50(1100N.m)	YC6MK400-33 (1800N.m)
<b>Transmission</b>	9JS119T-B	12JSD180TA
<b>Clutch</b>	Φ430Push-Type	430Pull-Type
<b>Front Axle</b>	153 Reinforced	153 Reinforced
<b>Rear Axle/ Ratio</b>	FS160/4.111	2x New 440 Twin Rear Axles / Ratio 4.11:1
<b>Leaf Spring</b>	11/9+5	3/4
<b>Frame</b>	282(8+4)	282 (8)
<b>Fuel Tank</b>	350LAluminum	600LAluminum
<b>Steering Machine</b>	Domestic (China-made)	Domestic (China-made)
<b>Tire</b>	12R22.5-18PR	12R22.5-18PR



CARGO TRUCK



CARGO TRUCK



PRODUCT CONFIGURATION

Model	Driving Type	Wheel Base	Cab	Engine	Transmission	Clutch	Front Axle	Rear Axle / Speed Ratio	Leaf Spring	Frame	Tank	steering wheel	Tires
LZ1310H7FB	8*4	1950+4900+1350	H73H	YC6L330-50 (1280N.m)	9JS135T-B	Φ430Push-Type	2*5.5T	2x 440 Axles / Ratio 4.444:1 with Wider Brakes & Oil-Lubricated	11/11/10	300(8+4)	600L Aluminum	Domestic (China-made)	11,00R20 -18PR
LZ1310H7FB	10*4			YC6L350-50 (1400N.m)	9JS150T-B								12R22.5 -18PR

PRODUCT CONFIGURATION

Model	Driving Type	Wheel Base	Cab	Engine	Transmission	Clutch	Front Axle	Rear Axle / Speed Ratio	Leaf Spring	Frame	Tank	steering wheel	Tires
LZ1250M5DB	6*4	5850+1350	H53D	YC6A270-50 (1100N.m)	9JS119TA	Φ430Push-Type	5.5T	2x 440 Axles / Ratio 4.444:1 with Wider Brakes & Oil-Lubricated	11/10	282(8+4)	350L Aluminum	Domestic (China-made)	12R22.5 -18PR
LZ1310H5FB	8*4	1950+4900+1350		YC6A290-50	9JS119TB		2*5.5T		2 * 440/5.143		11/11/10		

CARGO TRUCK



CARGO TRUCK



PRODUCT CONFIGURATION

Model	Driving Type	Wheel Base	Cab	Engine	Transmission	Clutch	Front Axle	Rear Axle / Speed Ratio	Leaf Spring	Frame	Tank	steering wheel	Tires
LZ5187XXYM3AB2	4*2	7100	M31B	YC4EG200-50 (735N.m)	8JS75TC	Φ395	5T	9T/4.875	11/12+9	264(6)	250L Aluminum	Domestic (China-made)	11R22.5 -18PR
LZ1161M3AB		6100		YC4S170-50 (600N.m)			3.6T	Modified 8T Axle / Ratio 5.286:1					

PRODUCT CONFIGURATION

Model	Driving Type	Wheel Base	Cab	Engine	Transmission	Clutch	Front Axle	Rear Axle / Speed Ratio	Leaf Spring	Frame	Tank	steering wheel	Tires
1L2JE11A33C9A	4*2	3360	L25	JE493ZLQ4 (260N.m)	5TS32	Φ265	2.2T	5T/6.142	3/3+2	190(5)	120L Plastic	Domestic (China-made)	7.00R16LT
1L22Y2AL 3314ZMB01F1			L2B	YCY24140-30 (400N.m)	6GS46	Φ325		295 Forged Steel Axle / Ratio 4.333:1					8/9+5

## DUMP TRUCK



### PRODUCT CONFIGURATION

Model	Driving Type	Wheel Base	Cab	Engine	Transmission	Clutch	Front Axle	Rear Axle / Speed Ratio	Leaf Spring	Frame	Tank	steering wheel	Tires
LZ3310H7FB	8*4	1950+3750 +1350	H72S	YC6MK400-33 (1800N.m)	12JSD200T (8Flanged Spline Coupling)	Φ430Imported	7.5T	2x 300 Cast Steel Axles / Ratio 5.262:1 with Wider Brakes	11/11/13	300(8+8)	350L Aluminum	ZF	12,00R20 -18PR

## DUMP TRUCK



### PRODUCT CONFIGURATION

Model	Driving Type	Wheel Base	Cab	Engine	Transmission	Clutch	Front Axle	Rear Axle / Speed Ratio	Leaf Spring	Frame	Tank	steering wheel	Tires
LZ3252PDJ	6*4	3800+1350	H72S	YC6MK375-33 (1650N.m)	12JSD180T +8Flanged Spline Coupling	Φ430Pull-Type	7.5T	2x 300 Cast Steel Axles / Ratio 5.262:1 with Wider Brakes	11/13	300(8+8)	350L(steel)	Domestic (China-made)	12,00R20 -18PR
LZ3254H7DB	6*4	3700+1450	H72D	YC6K1248-50 (2250N.m)	12TX2421TD+PTO +hydraulic retarder	Φ430Imported	6.5T	2x 15T Wheel-Reduction Axles / Ratio 4.15:1	3/10	282(8+4)	600L (Aluminum)	imported Bosch Electro -Hydraulic Steering Gear	12,00R24 -18PR

## DUMP TRUCK



### PRODUCT CONFIGURATION

Model	Driving Type	Wheel Base	Cab	Engine	Transmission	Clutch	Front Axle	Rear Axle / Speed Ratio	Leaf Spring	Frame	Tank	steering wheel	Tires
LZ3120M3AB	4*2	3600	M32B	YC4D140-33 (420N.m)	8JS75F	Φ350	145	153 Narrow Axle / Ratio 6.166:1	11/12+9	231(6+4)	160L	Domestic (China-made)	9.00R20

## MIXER TRUCK



### PRODUCT CONFIGURATION

Model	Wheel Base	Cab	Engine	Transmission	Clutch	Front Axle	Rear Axle / Speed Ratio	Leaf Spring	Frame	Tank	steering wheel	Tires
LZ5250GJBH5DB	H52	4050+1350	YC6MK350-50 (1600N.m)	10JSD160T	Φ430Pull-Type	7.5T	2x 300 Cast Steel Axles / Ratio 4.769:1 with Wider Brakes	11/13	300(8+8)	350L Aluminum	Domestic (China-made)	12.00R20 -18PR

## LORRY CRANE



### PRODUCT CONFIGURATION

Model	Wheel Base	Cab	Engine	Transmission	Clutch	Front Axle	Rear Axle / Speed Ratio	Leaf Spring	Frame	Tank	steering wheel	Tires
LZ1186M3AC	4500	M31RB	YCS06245-50 (845N.m)	6J80T	Φ395Push-Type	2*5.5T	2x New 440 Twin Rear Axles / Ratio 4.111:1	11/11/10	300(8+4)	350 Aluminum	Domestic (China-made)	11.00R20-18PR

## SPRINKLER TRUCK



### PRODUCT CONFIGURATION

Model	Wheel Base	Cab	Engine	Transmission	Clutch	Front Axle	Rear Axle / Speed Ratio	Leaf Spring	Frame	Tank	steering wheel	Tires
LZ1310M5FB	2100+4600+1350	H5C	YC6L350-50/ (1400N.m)	10JSD140T	Φ430Domestic (China-made) Pull-Type	5.5T RHD	9T Axle / Ratio 4.875:1	3/4+3	264(6)	250 Aluminum	Domestic (China-made)	11R22.5-18PR

## HYDROGEN ENERGY



## NEW ENERGY



### PRODUCT CONFIGURATION

Model	Driving Type	Wheel Base	Cab	Drive Motor	Transmission	Battery Pack	Front Axle	Rear Axle / Speed Ratio	Leaf Spring	Frame	Hydrogen Storage Tank	Steering Gear	Tires
LZ4250H7DZFCEV4	6*4	4050+1350	H73D	LEOG (250/360 kW) / Permanent Magnet Synchronous Motor	6E240 (with PTO)	MGL 88.3 kWh / Lithium Manganese Oxide (3 packs)	462	2*440(=5.571)	3/4	282(8+4)	2460(6*410)L	Domestic (China-made)	12R22.5 18PR

### PRODUCT CONFIGURATION

Model	Driving Type	Wheel Base	Cab	Battery	Motor (model/peak power)	transmission	Front Axle	Rear Axle / Speed Ratio	Leaf Spring	Frame	Tires
1M32RLLBAE 571899F1	4x2	5700	M31RB	CATL 210Kwh	Lonco TZ342XSSFY02 /180Kw	6E95	5T	10T/5.571	3/4+3	264(6+4)	12.00R20 -18PR



PRODUCT CONFIGURATION

Model	Driving Type	Wheel Base	Cab	Battery	Motor (model/peak power)	transmission	Front Axle	Rear Axle / Speed Ratio	Leaf Spring	Frame	Tires
1M32RLLBAE 571899F1	4x2	3360	L25B	Ningde Times 86.55kwh (large single package)	Dongfeng Electric Drive TZ228XS035 /115kw (integrated electric drive axle)	—	2.2T	5T /16.56 (electric drive Axle)	3/3+2	190(5)	7.00R16